

Two splendid goals in United victory rally

After trailing at the interval and looking as though they would never score, Cambridge United suddenly sparked to life to beat Peterborough with two outstanding goals in the Midland Floodlit cup competition at Newmarket Road last night.

United thoroughly deserved their narrow victory for they held a distinct advantage over their more experienced opponents for all but ten of the 90 minutes.

It was difficult to make a judgement on the experiment of the United manager, Roy Kirk, although one—Scurr at full-back—was an obvious success.

Fine game

Barr had a wonderful game and he continued the improvement he has shown in his previous three games for his new club. He worked unceasingly in mid-field and was

**Cambridge United 2,
Peterborough 1.**
(Attendance 1,545).

rewarded when he helped Jimmy Gibson to the winner.

The centre-forward did not have such a good game although little would seem to go right for him. However, he was quick enough to spot the chance and fire United into the lead late in the game.

Lawrence was the darling of the crowd. He set the game alight with a remarkable goal when he drove home from fully 35 yards and the ball rocketed into the net off a post. Earlier the wing half had hit the bar with a similar shot.

Hard luck

Up to that point, United seemed to be struggling. They had an equal share of the game but could not score. Several chances went begging and it was beginning to look as though the visitors' 40th minute goal would be enough to give them victory.

This goal was hard luck for Bill Kelly. He tried to cut out a cross shot from Moulden only to hit the ball on to the post and give Reed the easiest of chances to tap the ball home. It was made the more distressing by the fact that originally Smith had the shot well covered.

United should have equalised before half time when Day put Barr through. The inside forward beat Sims and rolled the ball to Graham, who missed an open goal. The tall inside-left had a much quieter game and he did not show any of the promise obvious on Saturday.

However, he was unlucky when Sims made a fantastic one-handed save from him in the 59th minute. But 60 seconds later the U's were level with Lawrence's spectacular effort.

The home side's chance seemed to disappear altogether when the star full-back, Dai Jones, had to leave the field with a badly cut forehead after this goal. Finch was switched to full-back while Graham moved to left half.

Winner

But Jones soon returned and within a minute his side had scored the winner. Billy Day crossed low and Gibson pushed a pass to Barr and moved forward to take a quick return and crack the ball left-footed low into the net.

Peterborough threw everything into the attack and three flying headers were only just wide of the mark. One by centre forward Reed—usually a fourth choice goalkeeper—glanced against a post before going out of play.

United, however, hung on and with Kelly calling most of his team back to keep the ball away, they held out and as the final whistle went Jones crossed and McVittie had the ball into the net again. But it was too late.

Cambridge United: Smith; Scurr, Jones; Lawrence, Kelly, Finch; Day, Barr, Gibson, Graham, McVittie.

Peterborough: Sims; Singleton, Crawford, Clamp, Hopkins, Bennett; Shiels, Moulden, Reed, Thompson, Maloy.



United's Hugh Barr goes up to head in front of the Peterborough goal—but without success.

Haverhill players in trial

Four Haverhill Rovers players have been selected to take part in the Suffolk County F.A. senior trial game at Kings Road, Bury St Edmunds, on Thursday evening.

In the Suffolk team are Ron Abbott at inside-left and Ray Smith as centre-half, while Phil Hart (right back) and Bernard Winne (left half) have been selected for the Rest.

Abbott has played for Suffolk several times and Smith has been picked as a county reserve but this is the first time Hart or Winney have had representative recognition.

Shock for Haverhill darts leaders

All three leading teams in the Haverhill Darts League dropped points in their games, the leaders, Rising Sun, coming off worst with a 7-3 home defeat to the Ex-Servicemen's Club.

The Sun, however, keep their three points lead, since they played off their outstanding game with lowly Bell and won 9-1.

Australian Arms and the champions, R.A.F.A. were held to draws by the White Hart and Rose Tavern respectively, but the two Royals, Exchange and Standard, kept up their winning form and are now close up with the leading clubs.

Good away wins were also scored by Black Horse at the Bull and Woolpack at the White Swan, while Queen's Head improved their position with a home win against the R.A.S.S.

Results: Australian Arms 5, White Hart 5, Queen's Head 7, R.A.S.S. 3, Royal Exchange 7, Bell 3.

White Swan 4, Woolpack 6, Rising Sun 3, E.S.M.C. 7, Rose Tavern 5, R.A.F.A. 5, Bull 2, Black Horse 8, Ram 3, Royal Standard 7.

How they stand

	P	W	D	L	F	A	P
Rising Sun	20	15	2	3	127	73	32
Aust. Arms	20	14	1	6	119	81	29
R.A.F.A.	20	11	6	3	116	84	28
Royal Exchange	20	11	4	5	112	88	26
Royal Standard	20	10	6	4	108	92	26
White Hart	20	9	7	4	105	95	25
Black Horse	20	9	5	6	105	95	25
Woolpack	20	9	3	8	104	96	21
E.S.M.C.	20	9	2	9	109	91	20
White Swan	20	8	4	8	107	93	20
Rose Tavern	20	8	5	7	101	108	15
Queen's Head	20	5	4	11	90	110	14
Ram	20	4	5	11	83	117	13
Bull	20	3	5	12	99	101	11
R.A.S.S.	20	4	1	15	79	121	9
Bell	20	4	0	16	71	129	8

Slick City foiled by a late equaliser

Chelmsford 2, Cambridge City 2
(Attendance 1,879).

Cambridge City were full-value for their point in last night's Eastern Professional Floodlight League match at New Writtle Street Stadium.

They displayed fluency and economy of effort and it was not until five minutes from the end that Chelmsford forced a fortuitous late equaliser.

Chelmsford are a side very much out of form, as their recent results indicate, but City deserve plenty of credit for their performance. Eddie Bailham led the attack with his customary verve and not a little skill.

Bailham's constant menace was rarely checked by Jimmy Elvin, a 17-year-old making his senior debut for Chelmsford, and with any luck the Irish ace might have had more goals both for himself and his colleagues. Appropriately enough Bailham,

who scored the only goal of the game when City won at Chelmsford in the Southern League on January 16, was on hand to give the visitors a 10th minute lead. Brian Hart put away Billy Wall, and the winger slid the ball through for Bailham to run on, evading a late challenge from Elvin and push the ball into the far corner.

After 21 minutes, however, Chelmsford were again on terms. Peter Bowstead, the former Cambridge United inside man, laid on the goal for Tony Nicholas, who dashed inside and banged a fierce shot past a surprised Bill Heath.

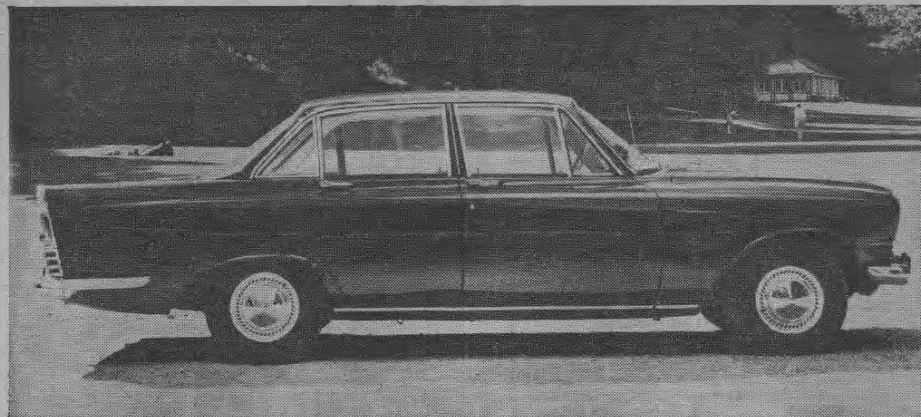
For a time Chelmsford dominated, but Cambridge were never very far out of the picture and in 40 minutes regained the lead. Again Wall made ground on the left

and centred. Allan Collie punched out, but managed only to send the ball to Reg Pearce, who neatly lobbed it back over everybody's heads and into the goal.

The second half fare was tedious indeed for the Chelmsford supporters, and Cambridge, by now the more authoritative and better ordered combination, were unlucky to forfeit their advantage. It seemed that if they played all night Chelmsford would never score again.

But after 85 minutes Brown rapped in a close range equaliser after Tony Butcher had headed on a right-wing corner.

Cambridge City: Heath; Carroll and Poole; Pearce, McGuzan and McNally; Spears, Moyle, Bailham, Hart and Wall.



... and now the EXECUTIVE ZODIAC

NEWEST MEMBER OF THE FAMOUS ZODIAC MARQUE

This exciting New Zodiac fulfils your every motoring ambition and more. Developed from the present Zodiac III, the Executive retains all the power and pace of 6 cylinder Ford motoring whilst adding many more luxury items of its very own.

Features include Automatic Transmission, individual reclining front seats in top quality leather, centre console and armrest, seat belts, push button radio, dipping rear view mirror, carpeted boot, and fog and long range driving lamps. Finished in superb new acrylic finishes including two exciting metallic hues — Malibu Gold and Alcuda Blue. The price of all this luxury a mere—£1,303 including purchase tax.

IF YOU'RE AT THE TOP OR WELL ON THE WAY CHANCES ARE THE EXECUTIVE ZODIAC WILL BE YOUR NEXT CAR-TRY A DEMONSTRATION TODAY

CAMBRIDGESHIRE  **MOTORS LTD.** 
Main Dealers Hills Road Cambridge Telephone 48151