

# U's through after anxious moments

Cambridge United 3, Kings Lynn 2.  
(Attendance 2,211).

CAMBRIDGE UNITED fans had a few anxious moments last night when their team spluttered before finally bursting into life in the Southern League Cup against Kings Lynn at Newmarket Road.

The visitors, who only had two direct shots at goal in the first half, led at the interval by a goal scored in the 41st minute. In fact, they held their slender lead for 25 minutes before Atkinson levelled. Within eight minutes of this the U's had taken the lead. But Lynn hit back to equalise when Slack allowed a header to slip through his hands and it was left for Welsh to score the winner three minutes from time.

## Great save

During the first-half United could never settle down, and although they had the majority of play, they were unable to turn it to advantage. The nearest they went was when Gibson snapped up a loose ball in his own penalty area before running nearly the whole length of the field only for Walls brilliantly to take his shot one handed.

The visiting attack moved sweetly and each time they mounted an attack they looked dangerous but there was always a home defender in a position to clear.

After the interval, the U's abandoned their stop-go tactics and began pushing the ball around. With this sudden rush of football, they at last looked like scoring. Billy Day was a constant thorn in the Lynn defence as he swept past the full-back time and again. The right-winger made the first goal when his low cross shot beat the goalkeeper and Atkinson stabbed the ball home.

Jimmy Gibson was probably United's best player on last night's performances. He worked tirelessly and was always willing to add his weight to the forward line.

Both teams had a player limping on their respective left wings. Haasz moved out during the first half after he slipped when turning and twisted his ankle. Soon afterwards, Banham moved out follow-

ing a leg injury. Gibson tried to liven his forwards up, but it was to no avail and Lynn took the lead four minutes before the interval in a lone break away. Partridge made ground on the right and when Finch failed to tackle he had plenty of time to chip the ball accurately on to Laverack's head for the centre forward to place past Slack.

After the interval it was quickly obvious that United were determined to get the equaliser and they gradually footballled their way to victory. In the 67th minute the goal finally came when Day passed Wright and his low centre beat Walls to give Atkinson the easy task of hitting home.

Eight minutes later the U's were ahead when Gibson crossed accurately from a freekick and Haasz spotted a gap to run through and head home.

But Lynn were not finished and it looked as though they might win a replay when Edwards headed home a corner with six minutes to go.

## Winner

But United, and Welsh in particular, had different ideas and with only three minutes remaining, the wing-half scored the winner. Day crossed from the right; Atkinson headed the ball out straight to McVittie, who sold a wonderful dummy to the defence and let the ball run on for Welsh to crack it low into the net.

So United won the right to visit Nuneaton in the third round, but they had some frights getting there.

United: Slack; Scurr, Finch; Gibson Kelly; Welsh; Day, Haasz, Hobbs, Atkinson, McVittie.

Kings Lynn: Walls; Proverbs, Banham, Edwards, Baker, Wright; Bacon, Jones, Laverack, King, Partridge.



Walls, the King's Lynn goalkeeper, rolls on the ground after saving a hot shot from Day.

# Can United stop Dartford's great run of success?

DARTFORD come to Newmarket Road to meet Cambridge United in a Southern League fixture on Saturday after completing a remarkable run of success. Unbeaten since September 15, they provided the shock of the day on Saturday when they routed the improved Worcester City side by 5-1.

They have won seven successive home games and built up a goal average of 23-7.

On their way to the first round proper of the F.A. Cup (they are at home to Fourth Division Aldershot on November 14) they have beaten four other clubs, two of them in the Premier Division of the Southern League—Bexley Utd. and Tonbridge.

Out of their recent games because of injury has been the player-manager, Alf Ackerman, but into his shoes has stepped Dennis Uphill, whose previous club before he joined Dartford, known as the 'Darts'—last season, was Romford.

## Local boy makes good

He has been scoring regularly, but the notable feature of the team's performances has been the form shown by the local player, inside-left John Ripley. With Uphill and Phil Amato, the former Gillingham forward, Ripley makes up a very strong striking force inside, while on the wings are two very useful players in Ritchie Ward (last season with Millwall) and John Dennis, who has been with two other Southern League clubs before joining Dartford.

Another local player is performing particularly well in goal. He is John Bourne.

The full-backs Tony Sitford (ex-Gravesend) and Peter Mabey (also from the same stable) have blended well together and power has been given to the half-back line by the signing this season of Desmond Anderson, also from Millwall.

Malcolm Pyke, formerly with West Ham, Les Burns and Bob Humphries (from Tunbridge Wells Rangers) are the other half-backs regularly called upon.

Dartford's line-up against the United might well be: Bourne; Sitford, Mabey; Humphries, Burns, Anderson, Ward, Amato, Uphill, Ripley, Dennis.

## Southern League

	P	W	D	L	F	A	P
Weymouth	12	8	1	3	26	14	17
Chelmsford City	12	6	3	3	20	23	16
Bedford Town	12	5	4	3	19	21	14
Dartford	10	5	3	2	23	13	13
Worcester City	10	3	7	0	19	11	13
Worcester City	11	5	3	3	26	16	13
Hastings Utd.	11	7	3	1	19	13	13
Cambridge U.	13	4	5	4	20	20	13
Margate	12	6	1	5	17	17	13
Tonbridge	12	4	4	4	28	26	12
Bexley Utd.	10	5	1	2	23	16	11
Guidford City	9	4	3	2	22	27	11
Cheltenham Tn.	10	4	3	3	17	19	11
Romford	12	3	4	5	17	20	11
Bath City	11	5	0	6	20	19	10
Wisbech Town	10	4	2	4	22	23	10
King's Lynn	11	3	3	6	17	25	10
Folkestone Tn.	11	2	5	4	17	27	9
Nuneaton	9	3	2	4	14	18	8
Cambridge City	19	1	3	15	12	25	5
Wellingborough	12	2	1	9	14	25	5
Rugby Town	11	2	1	8	17	35	5

# Hastings confident of both points

ALTHOUGH well placed in the Southern League table, Hastings United, who entertain Cambridge City on Saturday, have had a chequered season so far.

They have picked up several useful points away from home but the sparkling displays which the home crowd have been hoping to see have not been very frequent.

There has, however, been a big improvement during the last two weeks and notwithstanding a 4-1 defeat at Margate in a Kent Football League game on Monday, Hastings should, on the form they showed in their last home game, gain full points on Saturday.

The current forward line is the most effective Hastings have had this season though there is still too little thrust from the inside forwards.

Centre-forward George Francis, signed from Gillingham earlier this season, has a devastating shot when he chooses to use it, but the most aggressive forward at the moment is undoubtedly the outside-right, Alan Back, who has been in great form in recent weeks, closely followed by outside-left Gordon Burden, who can shoot with great power.

The defence had a bad jolt when the centre-half, Ray Brand, was injured a few weeks ago, but he

has recovered well and has not given much away.

If Hastings fall back into their old habits of failing to shoot, it is anybody's game.

The probable team will be: Agate; Cockburn, Tharme; Brown, Crudace, Simpson; Back, Marshall, Francis, Olah, Burden.

## Metropolitan League

	P	W	D	L	F	A	P
Tottenham H.	11	10	0	1	32	6	20
Arsenal	14	8	3	3	24	17	19
West Ham Utd.	13	9	0	4	28	16	18
Wimbledon	14	5	5	4	22	27	18
Gillingham	12	7	3	2	28	21	17
Bury Town	11	8	1	2	24	14	17
Chatham Town	12	4	2	6	30	26	16
Dunstable Town	12	4	3	5	21	17	14
Guilford City	12	5	2	5	22	19	12
Bedford Town	12	4	3	5	23	21	11
Woodford Town	12	4	3	5	17	26	11
Chertsey Town	11	4	2	5	25	34	10
Cambridge City	14	4	2	8	29	39	10
Charlton Ath.	11	4	1	6	20	9	9
Romford	13	4	1	8	27	31	9
Dartford	13	3	3	7	27	34	9
Stevenage T.	13	3	3	7	22	31	9
St. Neots Town	10	3	3	4	11	21	9
Chelmsford City	14	3	2	9	24	30	8
Luton Town	14	2	1	11	20	44	8
Met. Police	6	1	2	3	7	6	7
Bexley Utd.	13	1	5	7	15	26	7

# Hi-Fi

For all that's best in Hi-Fi equipment by

QUAD - LEAK - ROGERS

Amplifiers, Preamplifiers and Tuner Units

WHARFDALE - GOODMAN'S - QUAD LEAK

Speakers and Columns

Hi-Fi housing cabinets by G.K.D.

And Tape Recorders by - FERROGRAPH - VORTEXION - GRUNDIG PHILIPS - SIEMENS AND STELLA -

Contact your local dealers

**SPEECHLEY & CO.**  
25 HIGH STREET, LINTON  
Tel: Linton 557 and Cambridge 58752

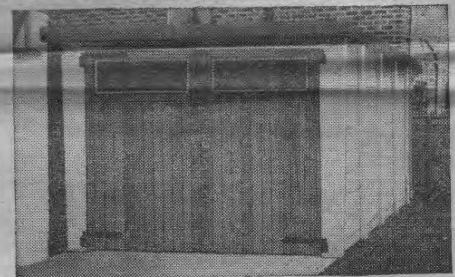
PLUS ALL THE LEADING MAKES IN

## RADIO & TELEVISION

Cash Discounts - No Stamps

### 10% Cash Discount on Transistor Radios

# BELCON CONCRETE GARAGES



See the above on display at

# STANLEY BARHAM LTD.

COLDHAM'S LANE CORNER

Newmarket Road, Cambridge

Telephone 57615

CATALOGUES SENT ON REQUEST

# CARPET SALE

BY PUBLIC SALE

Having purchased over 275 mixed Carpets which have been passed through insurance claims, these Carpets have been slightly damaged and soiled (backs only) through delivery on docks and railways.

We are now offering these to the public regardless of cost of manufacture.

Stocks include INDIANS, AXMINSTERS, etc. CARPETS and RUGS in all sizes. Some of these are over one inch thick.

## CARPETS from £5.10.0 each

NOTE: Any small deposit secures any Carpet. Delivery arranged free of charge.

Please Note: SALE ONE DAY ONLY

## ALEX WOOD HALL

NORFOLK STREET (off East Road) CAMBRIDGE

## FRIDAY, OCTOBER 30th

11 a.m. to 4 p.m.

Sale held by H. Kerry, 1 Park Avenue, Waltham Cross



AND RELAX  
let someone else  
do the driving...

BRITISH RAILWAYS

## SPURS HOME MATCHES

For all First Team League and F.A. Cup matches on Saturdays with a 3 p.m. kick-off

EXCURSIONS TO NORTHUMBERLAND PARK

Cambridge dep 12.40 9/6

Arrive 13.41 Return 17.52

## FROM CAMBRIDGE

THERE ARE FAST AND FREQUENT SERVICES EVERY DAY TO

# LONDON

(King's Cross or Liverpool Street)

## 14/- DAY RETURN

Travel outward on Monday to Friday at or after 09.00 Saturdays and Sundays by any train—Return by any train same day.

LAST RETURN SERVICE FROM LONDON TO CAMBRIDGE ON SATURDAYS DEPARTS FROM

KING'S CROSS AT 23.30

Most trains have buffet facilities.

Leave your car at the Station. Avoid traffic congestion and travel in comfort.

FOR FURTHER INFORMATION APPLY TO CAMBRIDGE STATION (TEL. 59711) OR TRAVEL AGENTS APPOINTED BY BRITISH RAILWAYS